

Identify Religious Mass Gathering

Has the national government banned or restricted gatherings above a certain size that would not allow this event from happening?

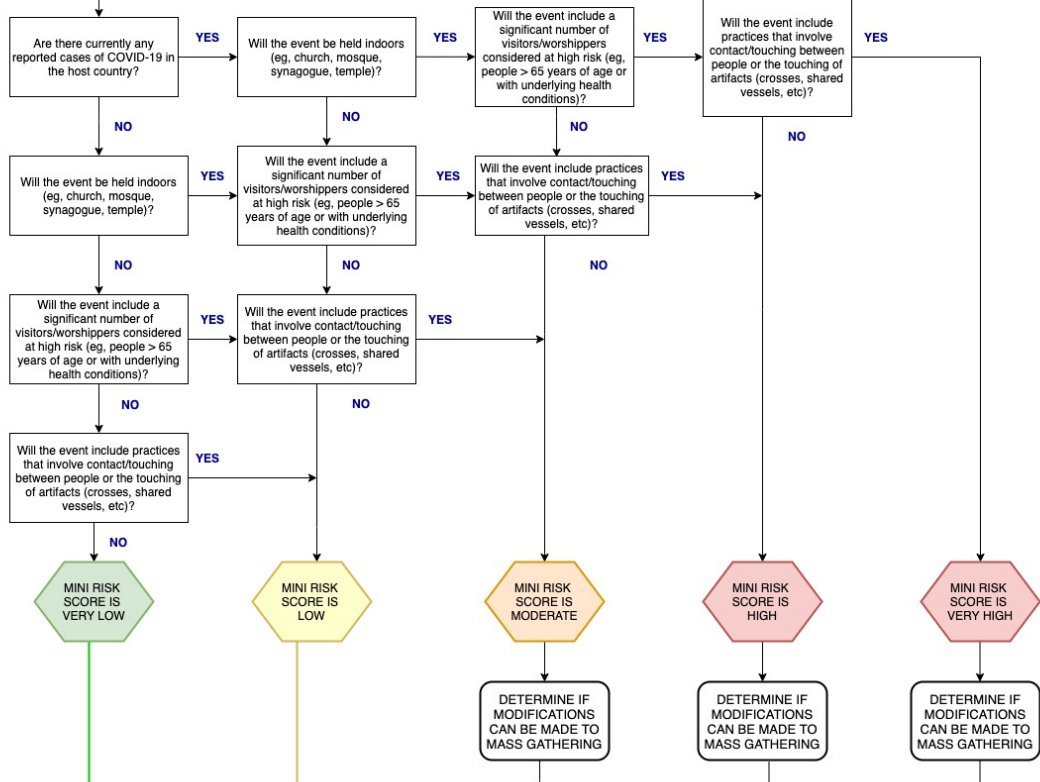
YES → Can the mass gathering be modified so that it can be held entirely online (ie, live-streaming, no in-person participation)?

YES → **OK TO PROCEED WITH MODIFIED (DIGITAL) MASS GATHERING**

NO → **DO NOT PROCEED WITH MASS GATHERING (due to national ban or restrictions)**

Disclaimer:
 A risk assessment should always be conducted for all mass gatherings (regardless of size or type), it should be based on the country strategy for controlling COVID-19 and should be updated periodically, in light of the new information available.
 It is WHO's view that all countries with community transmission should seriously consider postponing or reducing mass gatherings that bring people together and have the potential to amplify disease and support the recommended best practice of physical distancing. Any decision will be supported through the use of WHO tools, in particular the Risk Assessment for Mass Gatherings during COVID-19.
 If movement restrictions and further national measures have been established in the country, the WHO RA does not apply. However, when the process of re-opening/conducting mass gatherings is being considered post movement restrictions, it will be key to ensure any decisions are based on a risk assessment, such as the WHO Mass gatherings COVID-19 risk assessment.
 This guidance may change as the situation and the knowledge about COVID-19 evolves. WHO may provide advice and technical guidance to host countries on public health risks, but has no decision power to uphold, postpone, or cancel mass gatherings hosted by Member States.

Mini Risk Assessment



Possibility of Modifications

Can the MG be modified through answering YES to any of the following:
 Answer YES only if you are able to input a new modification after the preliminary/mini risk assessment is performed. Answer NO if you cannot perform this modification or if this question is not applicable or if you answered NO in the preliminary/mini risk assessment to a related question.

- Can the mass gathering be held entirely, or partly, online (ie, live-streaming, no in-person participation for high risk groups)?
- Can the service be moved outdoors?
- Can services be modified to ban the sharing of artifacts (eg using a common communion vessel, prayer rugs)?
- Can services be modified to restrict touching (especially kissing, shaking hands, hugging) and ensure physical distancing between worshippers?
- Will there be cleaning and disinfecting schedule of venues and artifacts before, during, and after services?
- Are there opportunities for hand hygiene throughout the venue (places to wash your hands with soap, hand sanitizers, rubs, and gels)?
- Are there established screening measures and procedures in place (including temperature checks, control for clinical symptoms)?
- Can early risk communication strategies be implemented (eg, advice to stay away if you feel unwell, if you are considered a high risk population, to follow social distancing connected to religious side events and other social gatherings)?

MINI RISK SCORE IS MODERATE
 If you answer: YES to at least TWO of the questions, proceed to MODIFIED MINI RISK SCORE = **LOW**
 Otherwise, remain at MODIFIED MINI RISK SCORE = **MODERATE**

MINI RISK SCORE IS HIGH
 If you answer: YES to at least FOUR of the questions, proceed to MODIFIED MINI RISK SCORE = **LOW**
 YES to at least TWO of the questions, proceed to MODIFIED MINI RISK SCORE = **MODERATE**
 Otherwise, remain at MODIFIED MINI RISK SCORE = **HIGH**

MINI RISK SCORE IS VERY HIGH
 If you answer: YES to at least SIX of the questions, proceed to MODIFIED MINI RISK SCORE = **LOW**
 YES to at least FOUR of the questions, proceed to MODIFIED MINI RISK SCORE = **MODERATE**
 YES to at least TWO of the questions, proceed to MODIFIED MINI RISK SCORE = **HIGH**
 Otherwise, remain at MODIFIED MINI RISK SCORE = **VERY HIGH**

Recommendations

